



Relocatable Hospital Discharge Units responding to the immediate need for additional healthcare space.

These can be supplementary standalone units located close to hospitals and care homes or simply added as extensions to existing houses to provide hospital discharge units for family members. Haus4Care units can be easily relocated to a new location to continue to provide vital healthcare space for others.

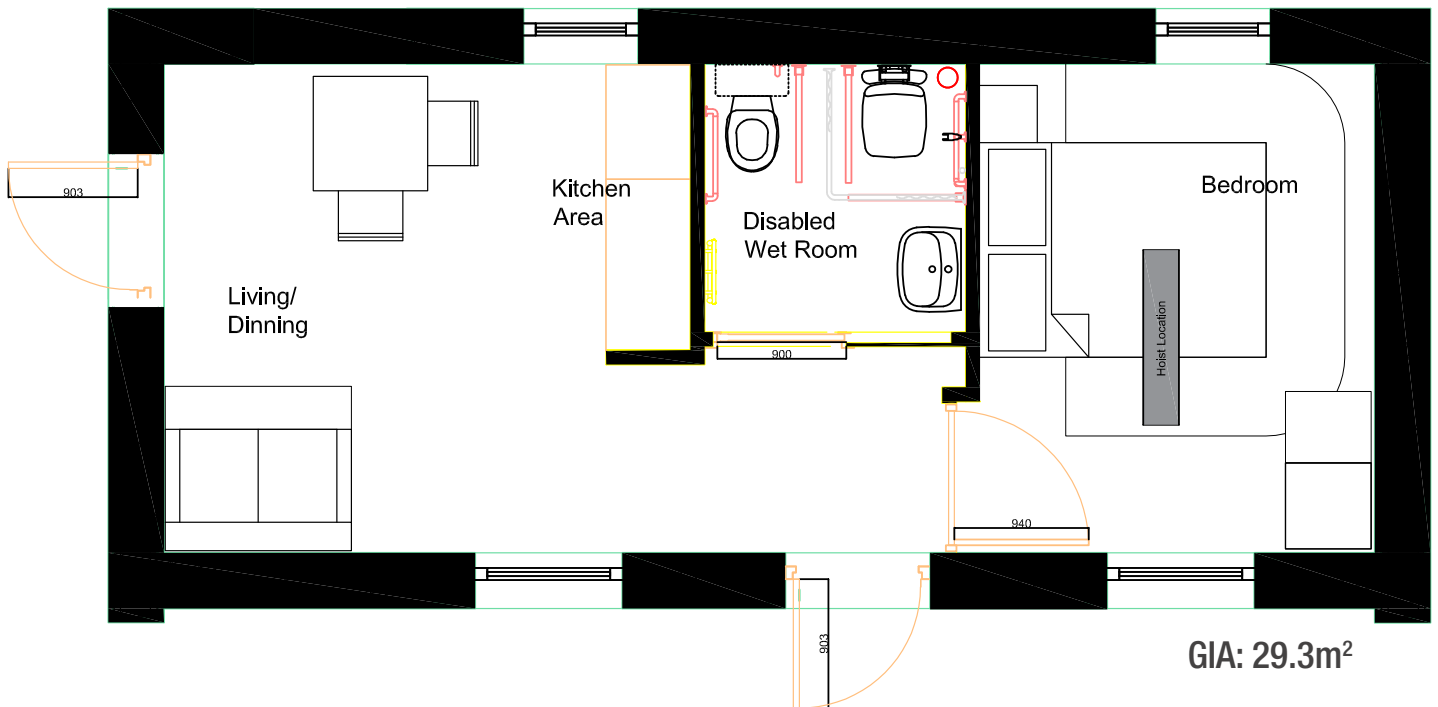
- Our turnkey finished units are **manufactured offsite**, delivered and installed ready for occupation within hours
- Specifically **fitted and designed to support a range of disabilities and patient recovery**
- **Passivhaus** standards and all the benefits of Beattie Passive
- **Fast connections** to main or temporary services
- **Lightweight foundation** requirements
- **Relocatable** without major structural alteration
- Built for **60 year plus life span**
- **Minimal energy demand** (possibly 100% off grid)

Beattie Passive innovative system lifts building standards and delivers the following:

- High performance structural thermal envelope delivering **Passivhaus energy and comfort standards**
- **High quality assured product**, through rigorous testing and certification
- **Full design flexibility** – any design, shape or style
- **Reduced heating requirements** - saving you money and reducing your Carbon footprint
- **Sustainable materials** and low carbon footprint
- **Healthier, more comfortable environment**, no drafts or overheating and helps to reduce health issues such as Asthma and Hay fever
- High levels of **sound, fire, flood and radon protection**



Unit Layout



What is included

General

- Steniboard external cladding
- High Performance external doors & windows (U-value 0.78 W/(m²K))
- Internal walls and ceilings - plasterboard and painted
- Skirting and architraves
- Internal wooden varnished doors - 900mm wide
- Flooring throughout

Disabled Access Wet Room

- Electric Shower
- WC
- Sink and tap
- Handrails

What is not included

- No allowance has been made for fitted and unfitted furniture
- Connection to services
- Foundation / ground works
- Landscaping
- Other associated works
- Passivhaus Low Energy Certification

Kitchen

- 5 kitchen units with sink and tap
- Laminated board splash back
- Fridge
- Single Oven
- Hob
- Extractor

Electrical

- 7 double electrical sockets plus electric points for appliances (accessible height)
- 6 internal lights points
- 2 external wall PIR lights
- Electrical hot water heater
- Mechanical Ventilation with Heat Recovery

Optional Extras

- Sprinkler system
- Alternative cladding
- Additional Handrails
- Rising Worktops